


A high-angle, wide shot of a dense forest covering a hillside. The trees are predominantly tall, slender evergreens with dark green foliage, interspersed with some lighter green, more rounded deciduous trees. The forest is thick and continuous, filling the entire frame. The lighting is soft and even, suggesting an overcast day or a shaded forest environment. The text 'hashi-coo' is centered in the middle of the image in a white, serif font.

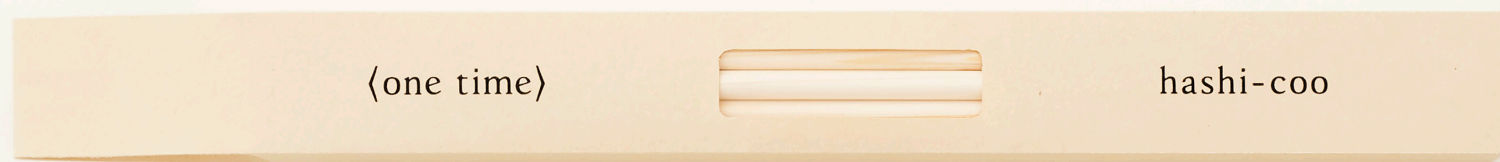
hashi-coo

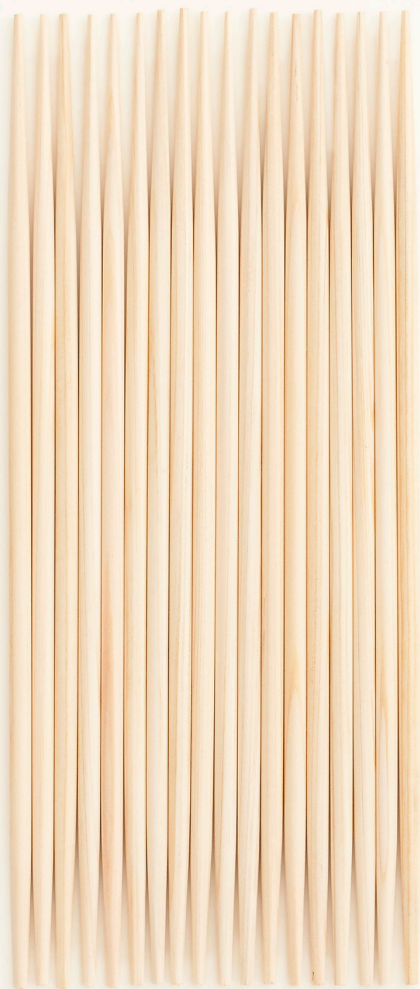


毎日つかうお箸だから、道具としての良さはもちろん、
ここから気持ちよくつきあえる「つくり方」にも目を配りました。
「つかう人が増えるほど、CO2を減らせるお箸」が
人とお箸と自然の、あたらしいつきあい方を提案します。

Since the chopsticks are used every day , we paid attention not only to the goodness of the chopsticks as a tool, but also to the "how to make" that you can comfortably interact with from the heart. "Chopsticks that can reduce CO2 as the number of people using them increases" proposes a new way of interacting with people, chopsticks, and nature .







one time

利休箸 〈研ぎ / 無垢〉

Rikyu chopsticks <sharpening / innocent>







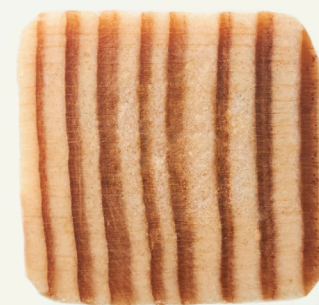
〈one month〉



hashi-coo























product detail

one time	Rikyu chopsticks <sharpening / innocent>	10 sets Shape: Round chopsticks Length: 24cm Weight: Approximately 5g / set Material: Japanese cypress Country of origin: Japan	4
	Square chopsticks <sharpening / innocence>	10 sets Shape: Round chopsticks Length: 24cm Weight: Approximately 6g / set Material: Japanese cedar Country of origin: Japan	5
	Upcycling chopsticks	10 sets hape: Various Length: 24cm Weight: Various Material: Various Country of origin: Japan	6
one month	Rikyu chopsticks <sharpening / beeswax>	3 sets Shape: Round chopsticks Length: 24cm Weight: Approximately 5g / set Material: Japanese cypress Country of origin: Japan	9
	Square chopsticks <sharpening / beeswax>	3 sets Shape: Square Length: 24cm Weight: Approximately 6g / set Material: Japanese cedar Country of origin: Japan	10
one year	Square <sharpening / URUSHI>	1 set Shape: Square Length: 24cm Weight: Approximately 6g / set Material: Japanese cedari Country of origin: Japan	14
	Pentagon <sharpening / URUSHI>	1 set Shape: Pentagon Length: 24cm Weight: Approximately 6g / set Material: Japanese cedar Country of origin: Japan	15
	Hexagon <sharpening / URUSHI>	1 set Shape: Hexagon Length: 24cm Weight: Approximately 6g / set Material: Japanese cedar Country of origin: Japan	16
	Octagon <sharpening / URUSHI>	1 set Shape: Octagon Length: 24cm Weight: Approximately 6g / set Material: Japanese cedar Country of origin: Japan	17

links

facebook



instagram



twitter



<https://hashi-coo.com/>



hashi-coo®



O E D O



210071
Arashibori



210088
Takizima



210095
Ichimatsu



210101
Uroko



210118
Arare

Fukui Cedar (23.0cm)
Dish Washer Safe
Product of PURE JAPAN MADE



210125
Namiajiro

210132
Yabaneami

210149
Ichimatsu

210156
Nenrin

210163
Kumiajiro

Fukui Cedar (23.0cm)

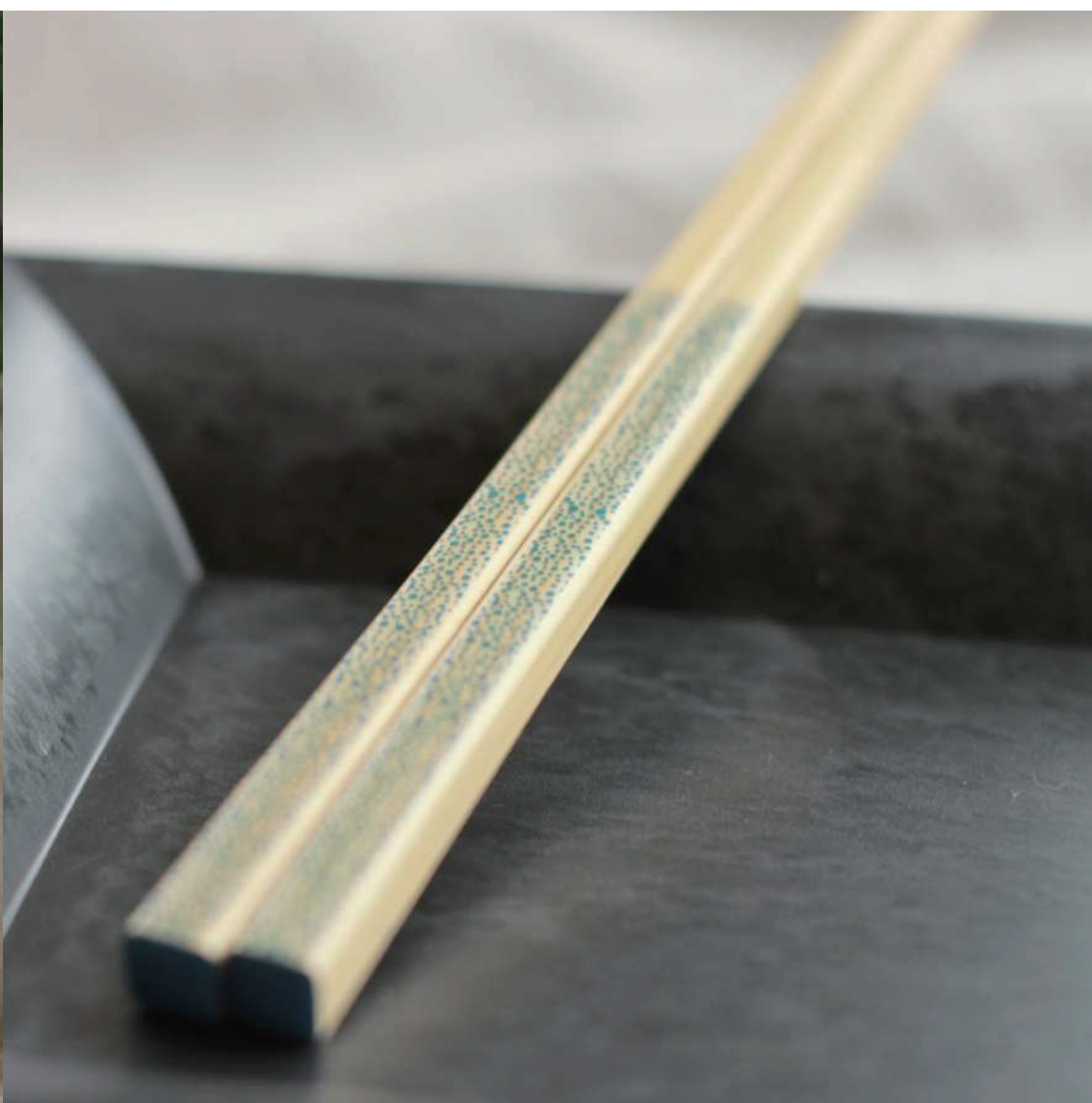
Dish Washer Safe

Product of PURE JAPAN MADE



Fukui Cedar (23.0cm/18cm)
Dish Washer Safe
Product of PURE JAPAN MADE











www.soj-inc.jp

We recommend that our every single chopsticks be washed by hand and place on teatowel to dry. OEDO/ihana brands can be washed in the dishwasher at temperatures below 60°C/140° F. Please use neutral detergents when wash in order to avoid dulling of the surface paint or texture. Visit our website for further information.

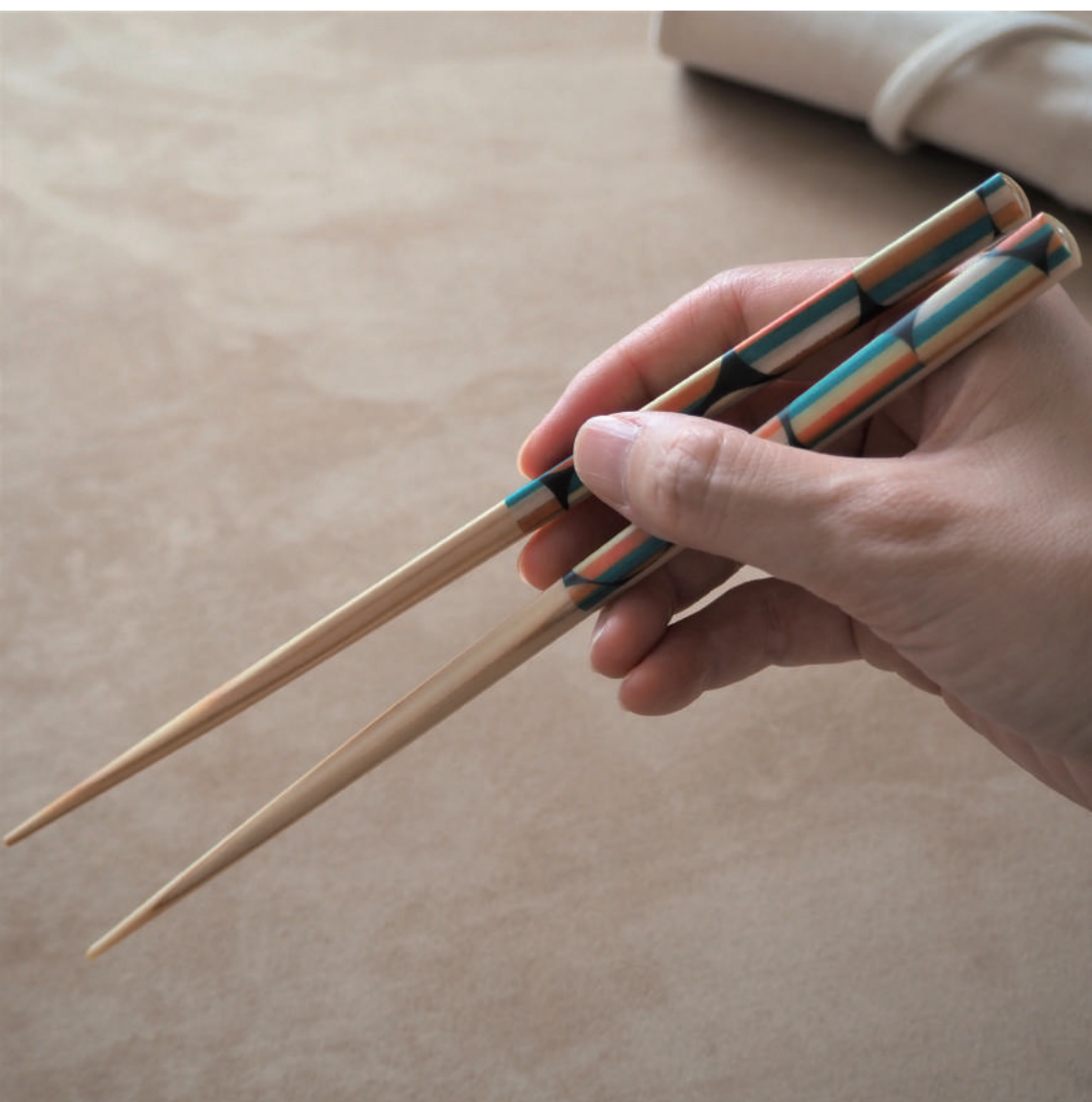




ihana

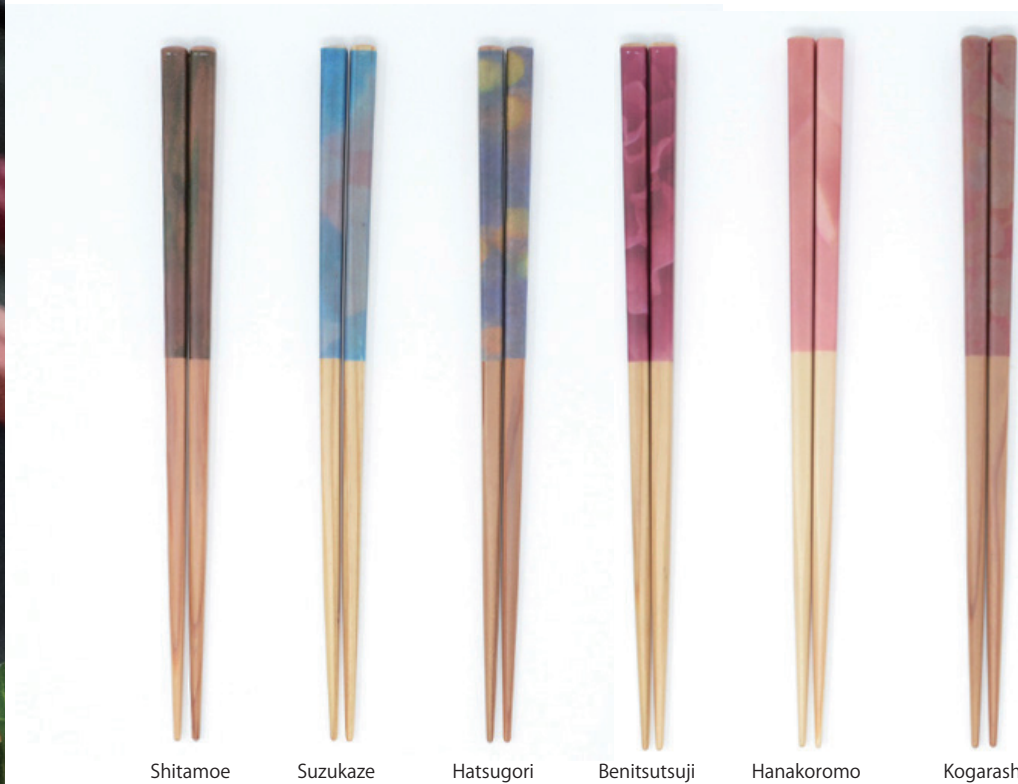


Fukui Cedar (22.5cm)
Dish Washer Safe
Product of PURE JAPAN MADE





ihana
-SEASONS-



Shitamoe

Suzukaze

Hatsugori

Benitsutsuji

Hanakoromo

Kogarashi

Fukui Cedar (22.5cm)

Dish Washer Safe

Product of PURE JAPAN MADE







www.soj-inc.jp

We recommend that our every single chopsticks be washed by hand and place on teatowel to dry. OEDO/ihana brands can be washed in the dishwasher at temperatures below 60°C/140° F. Please use neutral detegents when wash in order to avoid dulling of the surface paint or texture. Visit our website for further information.





HASHI by

STYLE OF JAPAN



210729
Triangle



210736
Square



210743
Pentagon



210750
Hexagon



210767
Heptagon



210774
Octagon



package

Shaven Malas Wood (23.5cm)

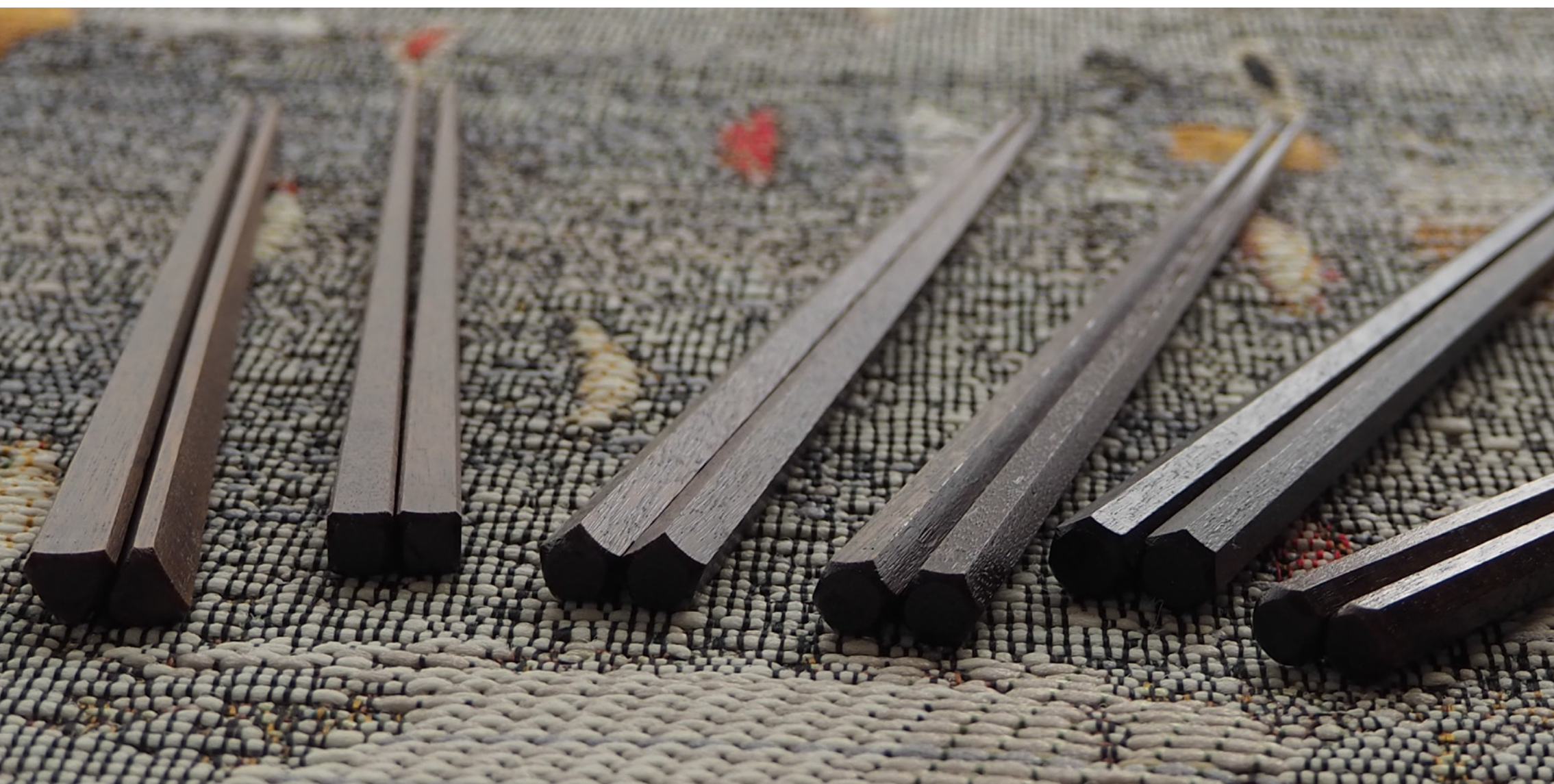
Urushi

Made in Japan











HASHI by

STYLE OF JAPAN
bio



Red Mosgreen Black Natural Brown

Organic Cedar(23.0cm)
Product of PURE JAPAN MADE





www.soj-inc.jp

We recommend that our every single chopsticks be washed by hand and place on teatowel to dry.
Please use neutral detergents when wash in order to avoid dulling of the surface paint or texture.
Visit our website for further information.